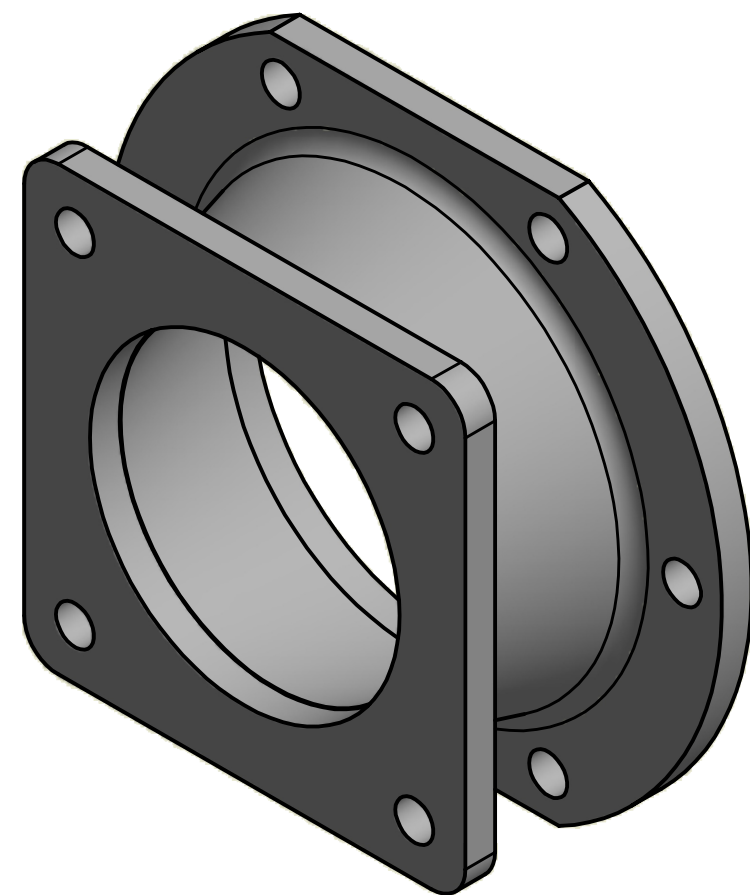
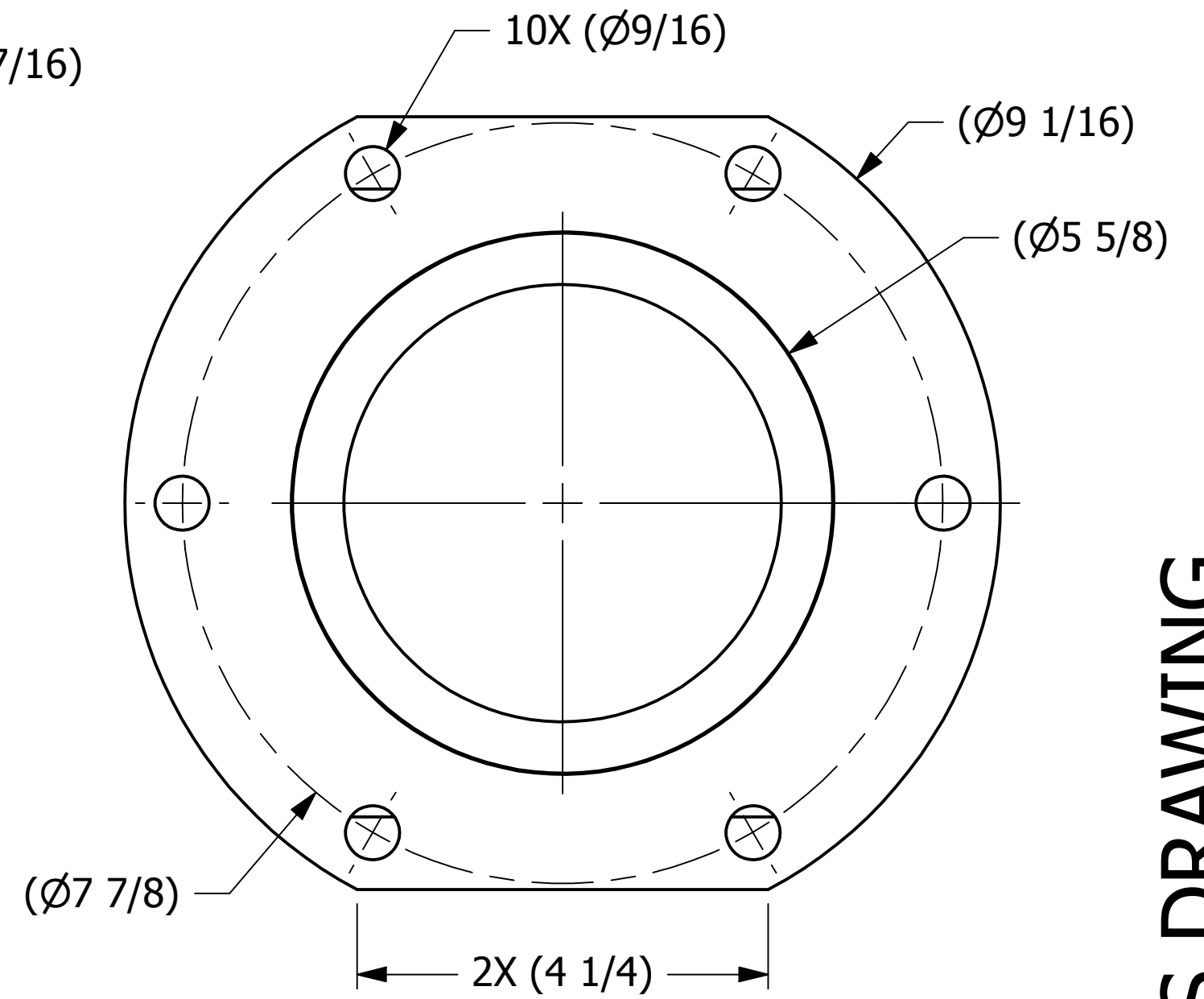
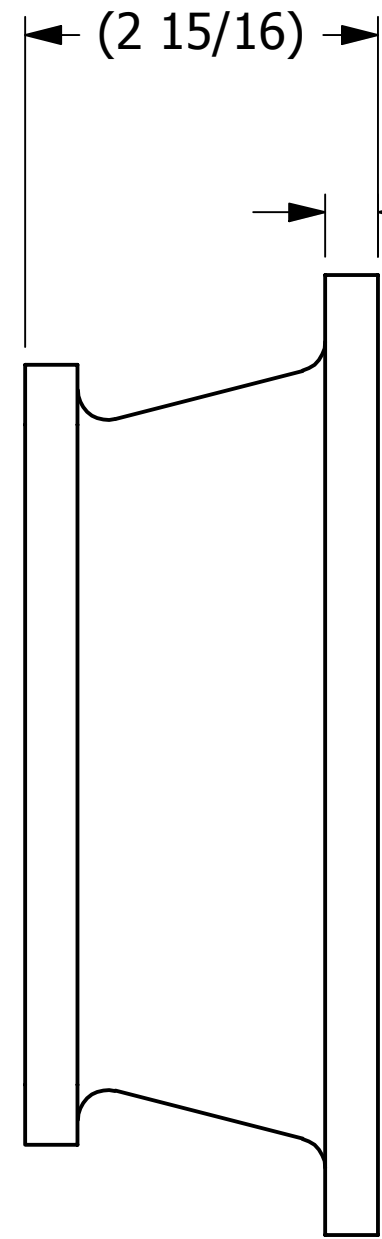
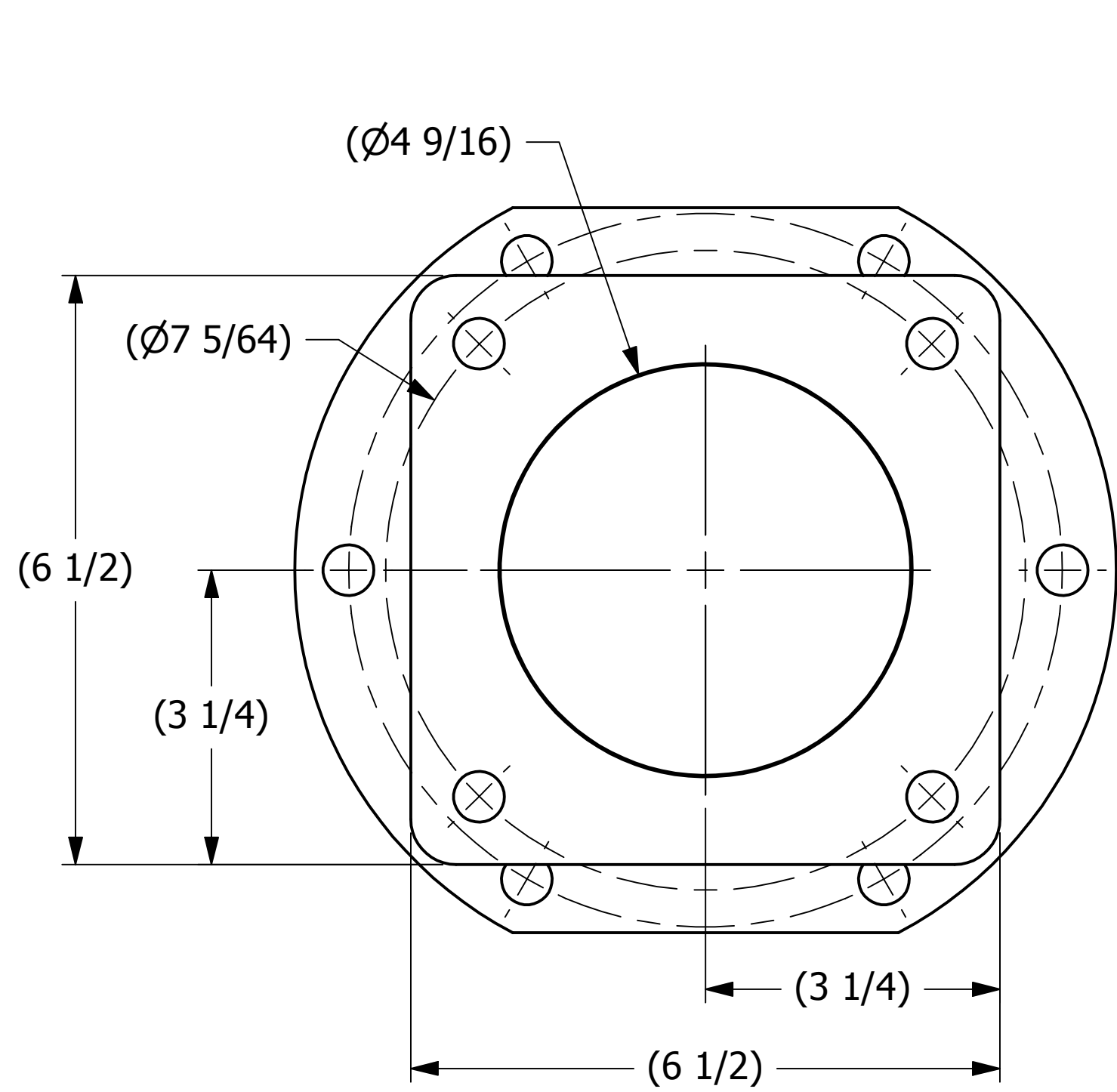


SALES DRAWING

SALES DRAWING



ISOMETRIC VIEW

THIS PRINT, PROPERTY OF SALCO PRODUCTS INC., CONTAINS PROPRIETARY INFORMATION AND MUST NOT BE COPIED, REPRODUCED, OR USED DETRIMENTALLY TO OUR INTEREST.

UNLESS OTHERWISE SPECIFIED DIMENSIONAL TOLERANCES FRACTIONAL: ±1/16 X.XX: ±.03 X.XXX: ±.015 ANGLE: ±1° DEBURR ALL SHARP EDGES. ALL MACHINED SURFACES TO HAVE A 125 RMS FINISH UNLESS NOTED OTHERWISE.	DRAWN BY:	ACC
	CHECKED BY:	CHL
	PROTOTYPE BY:	ACC
	PROTOTYPE DATE:	8/26/2004
	APPROVED FOR PRODUCTION BY:	ACC
	PRODUCTION DATE:	8/26/2004

REV	BY	DATE	DESCRIPTION
C	TAJ	02/15/11	REVISED DIM & ADD SURFACE FINISH SYM
B	PJG	7/24/07	ADDED NOTE AND UPDATED TOLERANCE
A	ACC	8/26/04	ADDED PART INTO THE SYSTEM

SALCO PRODUCTS, INC.		
PART NAME: TRANSITION FLANGE 5"		
MATERIAL: ASTM B211 6061-T6 ALUMINUM		
PROJECT #:	SHEET #:	SCALE:
110211	1 OF 1	5:8
DRAWING #:	PART #:	
C19544	PD45TF	